

Myelin Basic Protein Monoclonal Antibody

ORDERING INFORMATION

Catalog No.: 24201

Format: 500ug Protein G-purified antibody in PBS, pH 7.4.

SPECIFICATION SUMMARY

Antigen: Purified human myelin basic protein.

Host Species: Mouse

Antibody Class: IgG2b

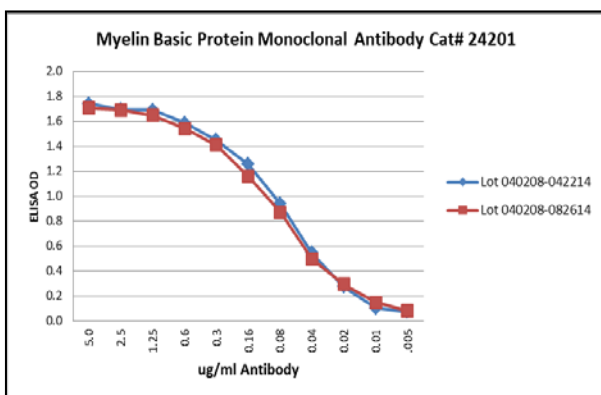
Stabilizers/Preservatives: None. Available on request.

SPECIFICITY

This antibody reacts with residues 130-136 in human myelin basic protein (21.5kDa and 18.5kDa molecular forms). It also recognizes primate, rabbit, sheep, goat, rat, and mouse myelin basic protein.

APPLICATIONS

This antibody may be used in ELISA, immunohistochemistry, and Western blot procedures for detection and/or quantitation of myelin basic protein.



ELISA: Human myelin basic protein coated on ELISA wells at 5ug/ml; binding detected with HRP-conjugated goat anti-mouse IgG + ABTS substrate.

DILUTION INSTRUCTIONS

Dilute in PBS or medium that is identical to that used in the assay system.

STORAGE AND STABILITY

This antibody is stable for at least one (1) year at -20°C to -70°C. Store product in appropriate aliquots to avoid multiple freeze-thaw cycles.

For in vitro investigational use only. Not for use in therapeutic or diagnostic procedures.