

Glypican-1 Monoclonal Antibody

ORDERING INFORMATION

Catalog No.: 34029

Size: 100 ug Protein G-purified antibody in PBS, pH 7.4.

SPECIFICATION SUMMARY

Antigen: Recombinant full-length human glypican-1.

Clone no.: 9E9

Host Species: Mouse

Antibody Class: IgG1

Stabilizers: None

Preservatives: None. Available on request.

BACKGROUND

Glypican-1 is a widely expressed, GPI anchored, cell surface proteoglycan that has been reported to be important in cellular adhesion and migration. Glypican-1 also functions as an accessory molecule for signaling receptors. Glypican-1 is overexpressed in human gliomas and pancreatic ductal cell carcinomas. Expression of glypican-1 is associated with the aggressive behavior of tumor cells *in vitro* and *in vivo*.

SPECIFICITY

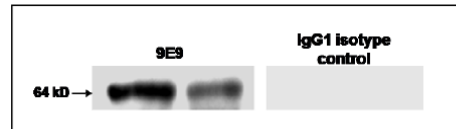
This antibody recognizes native and recombinant human and mouse glypican-1.

APPLICATIONS

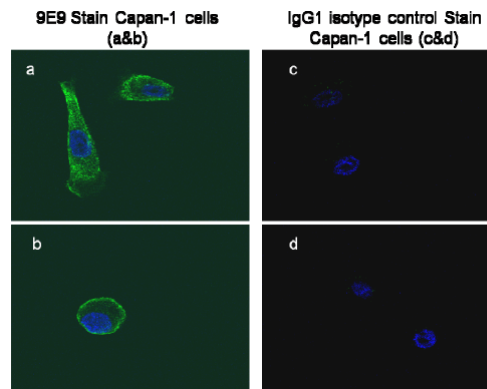
ELISA: at 1-5ug/ml will detect recombinant glypican-1 on the solid phase at 200ng/well.

APPLICATIONS (continued)

Immunoblotting: at 1-10ug/ml, a band of approx. 64 kDa is detected in normal mouse brain.



Immunofluorescence: at 1-10ug/ml, positive staining of human pancreatic carcinoma cell line Capan-1.



These are recommended concentrations. User should determine optimal concentrations for their applications.

DILUTION INSTRUCTIONS

Dilute in PBS or medium which is identical to that used in the assay system.

STORAGE AND STABILITY

This antibody is stable for at least one (1) year at -20°C. Avoid multiple freeze-thaw cycles.