

## Rotavirus A Monoclonal Antibody

### ORDERING INFORMATION

Catalog No.	Clone No.	MAb Subtype	Size
20601	3C10	IgG2a	100ug
20602	2G6	IgG2a	100ug

**Format:** 100ug Protein A-purified antibody in PBS, pH 7.4, 0.09% sodium azide.

### BACKGROUND

Rotavirus (RV) is the major cause of infantile gastroenteritis worldwide, however, RV vaccination has substantially decreased the rate of infant mortality. RV is a double-stranded RNA virus in the family *Reoviridae*. There are nine species of RV referred to as A, B, C, D, E, F, G, H and I; rotavirus A is the most common species, responsible for more than 90% of rotavirus infections in humans.

### SPECIFICATION SUMMARY

**Antigen:** Purified bovine rotavirus cell culture adapted strain MR.

**Host Species:** Mouse

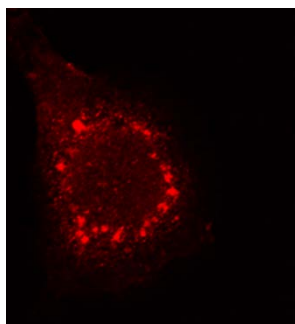
**Specificity:** These antibodies recognize bovine and human rotavirus A. #20601 also reacts with monkey rotavirus (SA-11) and porcine rotavirus (PP).

- #20601 is specific for p42 inner capsid protein.
- #20602 is specific for Vp7 outer capsid protein.

### APPLICATIONS

*ELISA, Immunoblotting, and IHC*

*Immunofluorescence*



Detection of RV strain SA11 in paraformaldehyde-fixed HT29 cells 9 hours post-infection. Cells were permeabilized with 0.1% Triton-X100 for 15 minutes at 4°C prior to staining.

Endusers should determine optimal concentrations for their applications.

### DILUTION INSTRUCTIONS

Dilute in PBS or medium that is identical to that used in the assay system.

### STORAGE AND STABILITY

This antibody is stable for at least one (1) year at 4°C or -20°C. If frozen, store in appropriate aliquots to avoid multiple freeze-thaw cycles.

*For in vitro investigational use only. Not for use in therapeutic or diagnostic procedures.*