

Ki-67 Monoclonal Antibody

ORDERING INFORMATION

Catalog No.	Clone No.	Size
34063	G067.1	100ul

Format: Purified antibody in Tris buffer, pH 7.3-7.7, 1% BSA, <0.1% sodium azide.

BACKGROUND

Ki-67 is a nuclear, non-histone protein that is expressed only during active phases of the cell cycle (G1, S, G2, and M), but not in the resting phases of G0 and G1 early phase. Although it has been associated with ribosomal RNA transcription, it is strongly linked to cell proliferation and has been used as an effective marker in grading proliferation rate of tumors including those of brain, breast, cervix, and prostate.

DESCRIPTION

Antigen: Recombinant human Ki-67.

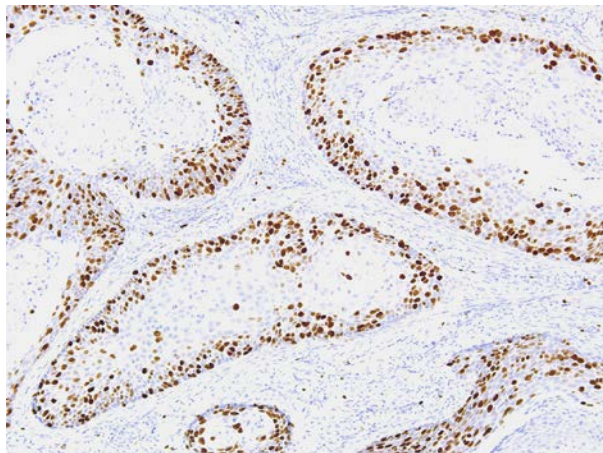
Accession No.: P46013.

Host: Mouse

Specificity: Human Ki-67. Reactivity with other species has not been investigated.

APPLICATIONS

Immunohistochemistry: use at a dilution of 1:100-1:200 on formalin-fixed, paraffin-embedded samples after heat-induced epitope retrieval at pH 9 for 10-30 minutes.



Detection of Ki-67 in human cervical cancer tissue with #34063 diluted 1:100-1:200.

STORAGE AND STABILITY

Store at 2-8°C. Do not freeze.

For in vitro investigational use only. Not for use in diagnostic or therapeutic applications.