

**recomLine Campylobacter IgG**  
**recomLine Campylobacter IgA**

Increased  
sensitivity  
by use of p39

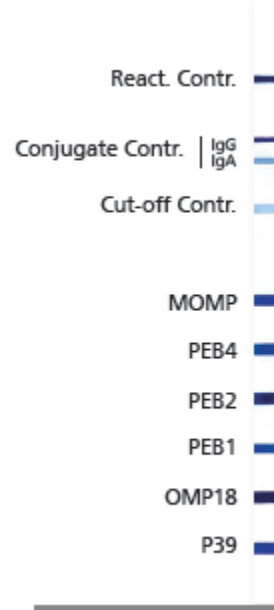
Strip immunoassay with recombinant antigens for detection of IgG or IgA antibodies to *Campylobacter jejuni* and *Campylobacter coli*

The genus *Campylobacter* comprises gram-negative, spiral-shaped, microaerophilic, mesophilic to thermophilic bacteria with bipolar flagella. Human *Campylobacter* infections are mainly food-associated intestinal infections with world-wide incidence. Infection by *Campylobacter jejuni* is much more frequent than *Campylobacter coli*.

*recomLine* Campylobacter kits detect IgG or IgA antibodies to specific recombinant antigens of *Campylobacter jejuni* and *Campylobacter coli*.

**Product #6272** *recomLine* Campylobacter IgG  
(20 tests per kit)

**Product #6273** *recomLine* Campylobacter IgA  
(20 tests per kit)



For more information visit

<http://www.mikrogen.de/english/deutschland/home.html>

Available in the U.S. For Research Use Only.  
Not intended for diagnostic procedures.