

NEW



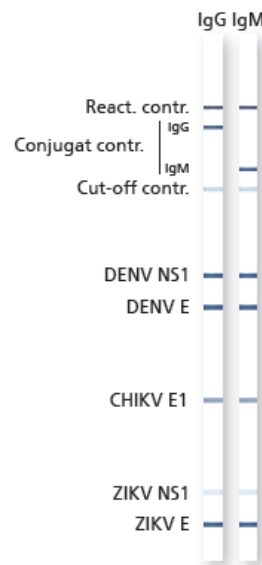
recomLine Tropical Fever IgG recomLine Tropical Fever IgM

The first immunoblot assay for simultaneous detection and differentiation of Dengue, Chikungunya and Zika antibodies. CE marked, Patent Pending

As the Zika virus epidemic continues to spread, reliable differentiation of Zika virus from related viruses has been challenging, particularly in areas with a long history of endemic Dengue. Both Zika virus and Dengue virus belong to the same family of flaviviruses. Many Dengue assays detect antibodies to the viral envelope (E) protein which cross-react with E protein of other flaviviruses such as Zika (ZIKV), Yellow Fever (YFV), West Nile Fever (WNV), Tick-borne Encephalitis (TBE), and Japanese Encephalitis (JEV). However, detection of antibody to the NS1 protein has been reported to have minimal cross-reactivity with NS1 proteins of different flaviviruses. *The recomLine Tropical Fever immunoblot combines NS1 and E proteins into one assay in order to distinguish antibodies to Dengue, Chikungunya and Zika viral proteins.*

recomLine Tropical Fever Recombinant Antigens

Antigen band	Description
DENV NS1	Dengue NS1-protein
DENV E	Dengue E-protein
CHIKV E1	Chikungunya E1-protein
ZIKV NS1	Zika NS1-protein
ZIKV E	Zika E-protein

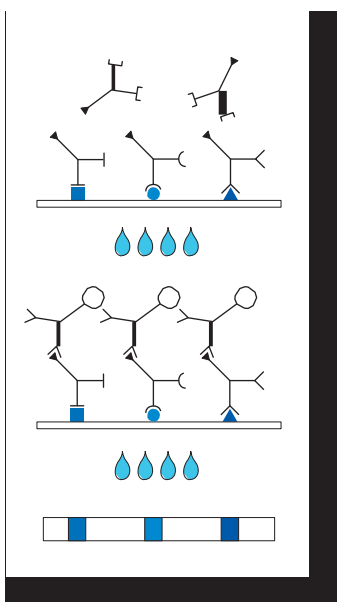


#7872 (#7870) recomLine Tropical Fever IgG
Reagents for 20 (100) determinations

#7873 (#7879) recomLine Tropical Fever IgM
Reagents for 20 (100) determinations

*Available in the U.S. For Research Use Only.
Not intended for diagnostic procedures.*

Test Principle and Procedure



1st Incubation A test strip loaded with DENV, CHIKV and ZIKV antigens is incubated with diluted serum or plasma in a dish or tube for **1 hour**.

Wash 3X

2nd Incubation Peroxidase conjugated anti-human antibodies (IgG or IgM specific) are added. Incubate for **45 minutes**.

Wash 3X

Color reaction **8 minutes** after addition of the coloring solution, insoluble colored bands develop at the sites on the test strips where antibodies are bound.